



FINDING THE PROPERTY OF YOUR DREAMS

● **Projects | 2021**

**Ready to move in villas
Minutes from the beachfront.**



www.plazaexclusive.com

(+357) 22 55 00 00

v.christou@plazaexclusive.com

Contact Person: Valando Christou



Plaza

EXCLUSIVE PROJECTS

Where dreams are called home.



The Company

PLAZA Exclusive Projects

Plaza Exclusive Project is managed by experienced professionals in developing and constructing residential and commercial real estate projects and with ownership of vast amounts of land. We are owners of land within our group of more than 1,000,000 square meters (10,000,000 square feet).

Our group has designed, constructed or completed a number of iconic with substantial size buildings and projects in the residential & commercial market.

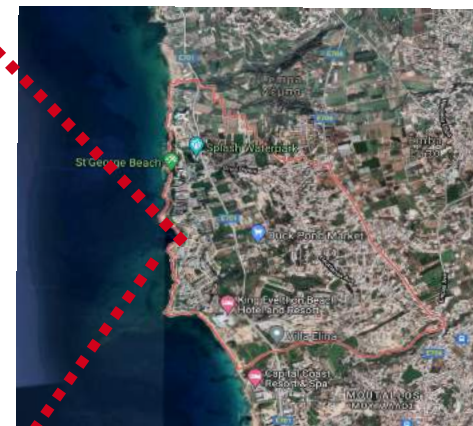
With experience counting of over 2 decades and a wide network of accredited and distinguished advisors, partners and consultants in the construction and development industry our Group has managed to achieve strategic agreements with internationally acknowledged brands such as the W Hotel & Residences, the Hadassah Health Park and others.

○ Cyprus | The Location

○ Innovate your World...

Chloraka Village

- 3Km in the North of Paphos lays the village of Chloraka.
- 2 minutes walking distance from the beach & 10 minutes only away from the city center the area can provide numerous amenities of all types to its residents.
- At an average altitude of approximately 70-80m one can enjoy the panoramic sea view in most of its locations.





INSIGHTS
to your dream
house





Property Opportunity

CHLORAKA Laguna Villas

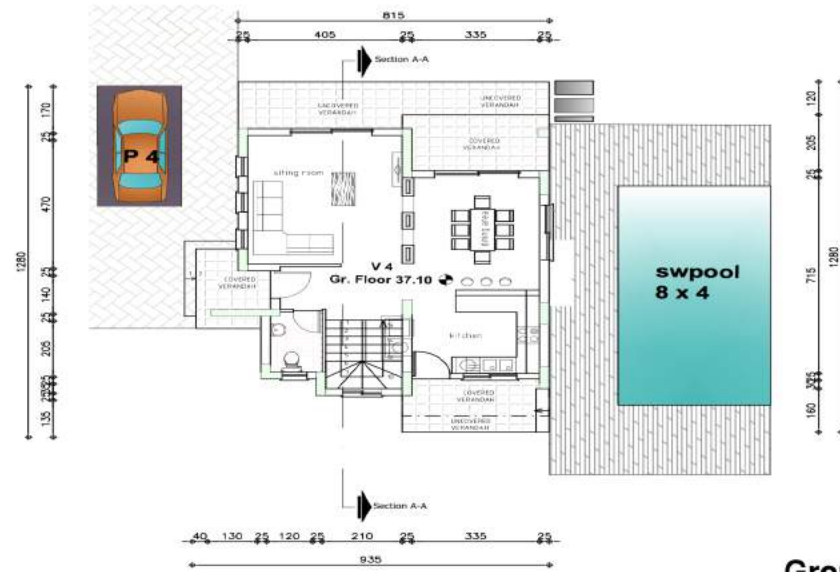
Plot Area	Total Cov. Area	Bedrooms	Bathrooms	Pool	Status	Prices
346 m ²	185 m ²	3	3	4x8	Available	€690.000
348 m ²	185 m ²	3	3	4x8	Available	€690.000
366 m ²	185 m ²	3	3	4x8	Available	€690.000
434 m ²	185 m ²	3	3	4x8	Available	€690.000

1 4 semi-detached villas of 185 square meters of total covered area in a plot of approximately 400 square meters.

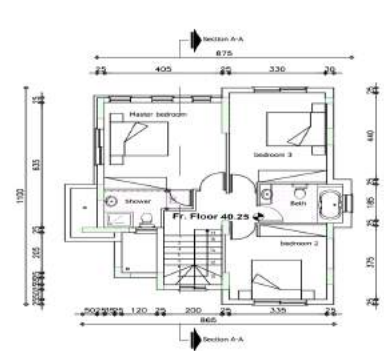
2 Our villas consist of 3 bathrooms and 3 bedrooms.

3 Each villa has its own private pool 4mx8m.

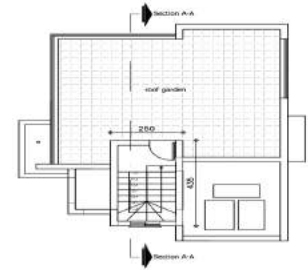




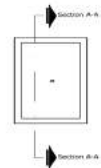
Ground floor



First floor plan



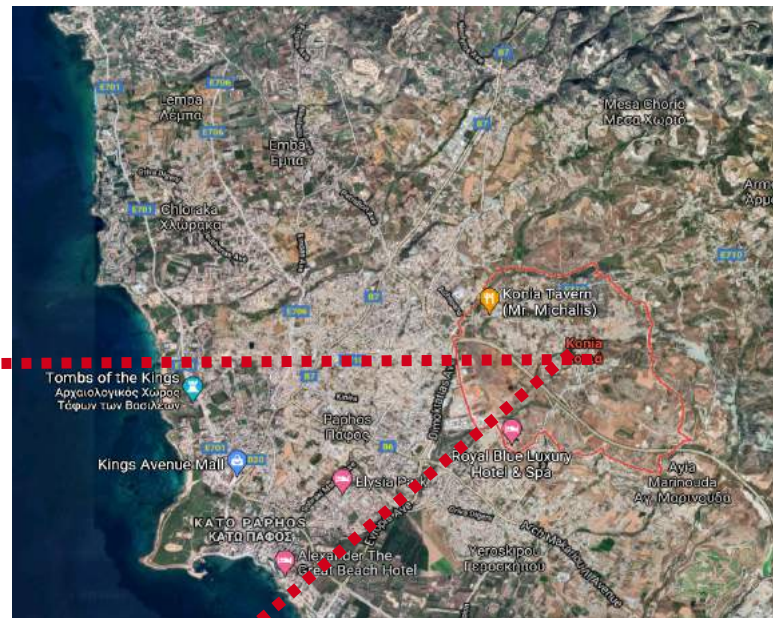
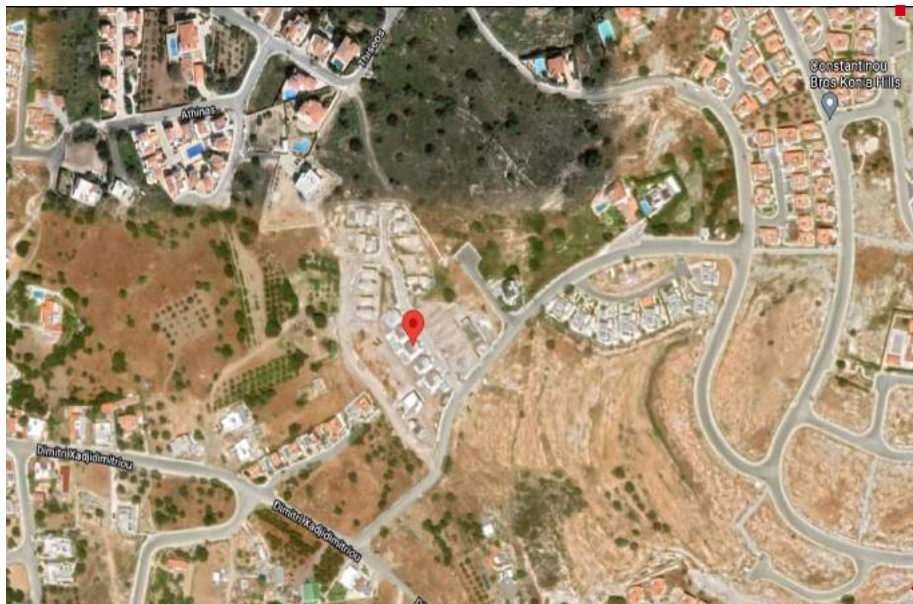
Roof Plan



Cyprus | The Location

Konia Village

- Konia is a village in the Paphos District of Cyprus, located 3 km east of Paphos. In the northwest is Anavargos village, Armou in the northeast, Marathounta East and Yeroskipou in the South.



- **District** Paphos District
- **Population** 1,100 (2001)
- **Elevation** 189 m
- **Weather** 24°C, Wind SW at 13 km/h, 73% Humidity
[weather.com](https://www.weather.com)



INSIGHTS to your dream house





Property Opportunity

Konia Villas

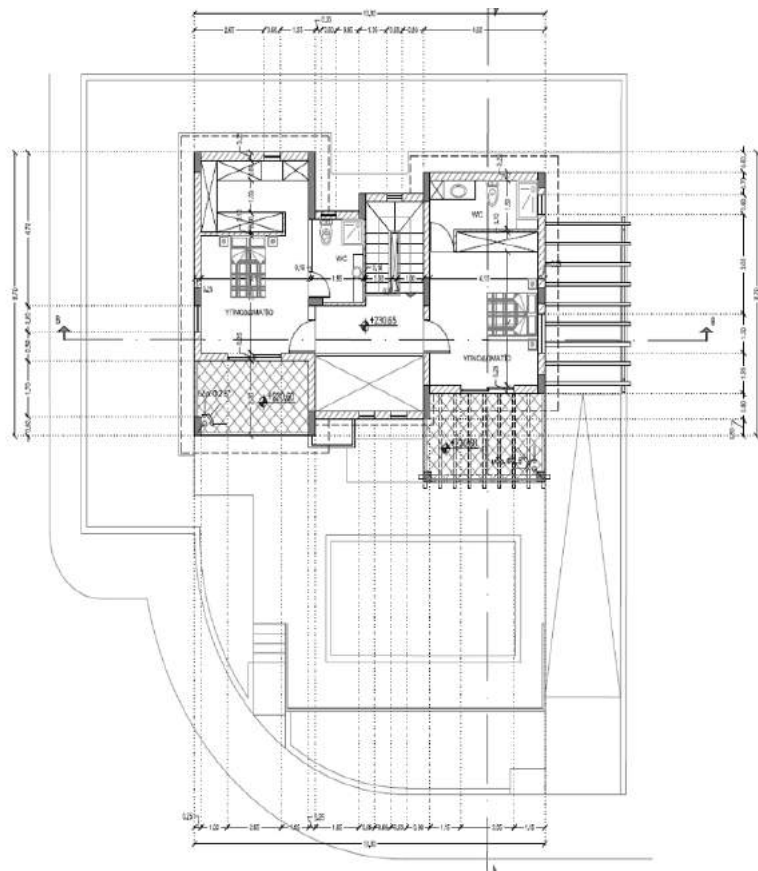
Plot Area	Total Cov. Area	Bedrooms	Bathrooms	Pool	Status	Prices
483 m ²	226 m ²	4	3	4x8	Available	€547.000
303 m ²	151 m ²	3	3	4x8	Available	€393.000
405 m ²	210 m ²	3	3	4x8	Available	€496.000

1 3 semi-detached villas of approximately 200 square meters of total covered area in a plot of approximately 400 square meters.

2 Our villas consist of 3 bathrooms and 3|4 bedrooms.

3 Each villa has its own private pool 4mx8m.

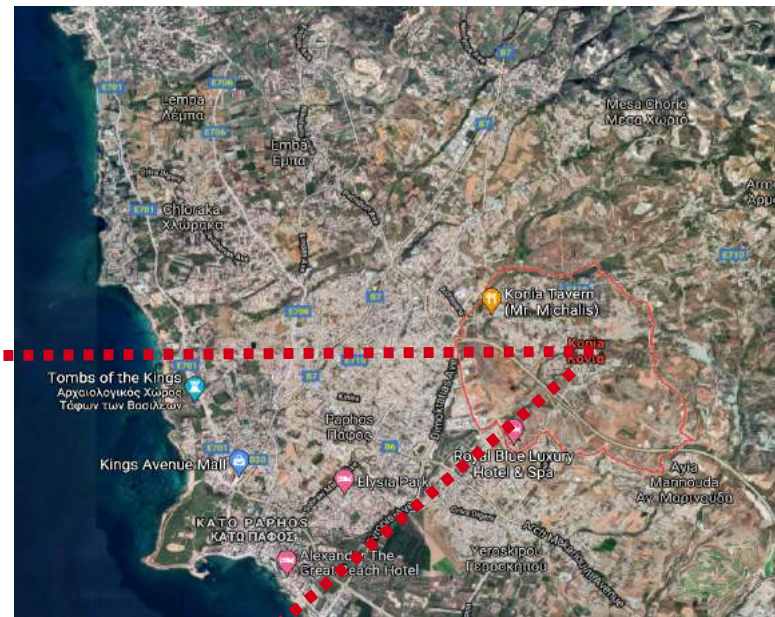
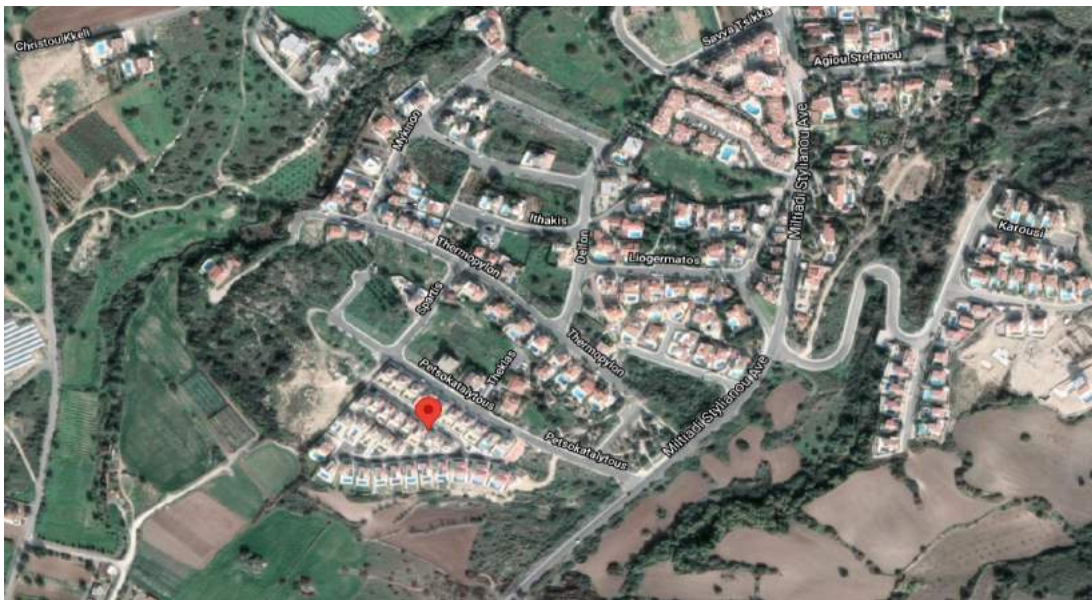




Cyprus | The Location

Tala Village

- Tala is a large suburban village 6 km north of Paphos, Cyprus. Many non-Cypriots have moved here permanently or have a summer home in Tala. Agios Neophytos Monastery is 1 km north. Is located 290 meters above sea level.



- District** Paphos District
- Population** 3,335 (2011)
- Lowest Elevation** 150 m (490 ft)
- Weather** 26°C, Wind W at 23 km/h
70% Humidity [weather.com](https://www.weather.com)



INSIGHTS
to your dream
house





Property Opportunity

Tala Villas

Plot Area	Total Cov. Area	Bedrooms	Bathrooms	Pool	Status	Prices
290 m ²	178 m ²	4	3	4x8	Available	€395.000
300 m ²	245 m ²	3-4	3-4	4x8	Available	€458.000
501 m ²	178 m ²	3	3	4x8	Available	€458.000

1 3 semi-detached villas of approximately 200 square meters of total covered area in a plot of approximately 300 & 500 square meters.

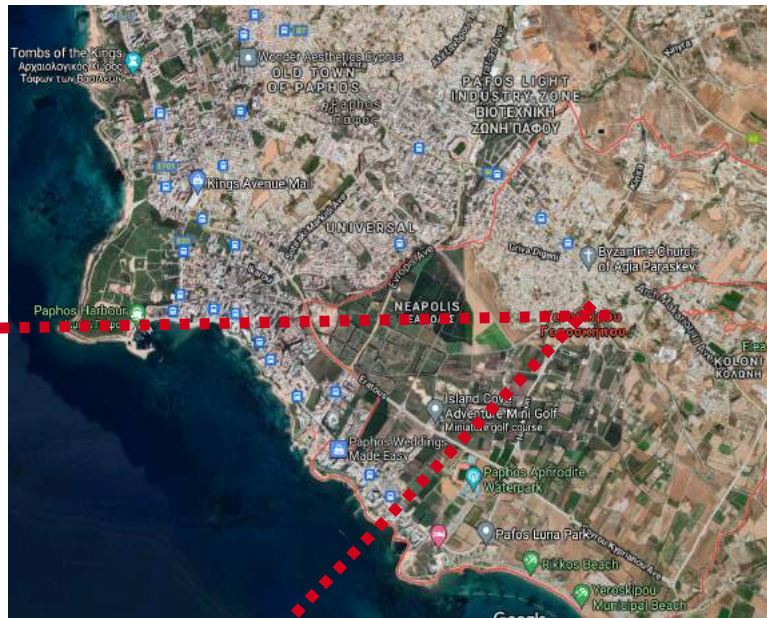
2 Our villas consist of 3 bathrooms and 3|4 bedrooms.

3 Each villa has its own private pool 4mx8m.



Yeroskipou Town

-



- **District** Paphos District
- **Population** 8,313 (2011)
- **Elevation** 35 m
- **Weather** 26°C, Wind W at 23 km/h
70% Humidity weather.com



INSIGHTS
to your dream
house





Property Opportunity

Yeeroskipou Villas

Plot Area	Total Cov. Area	Bedrooms	Bathrooms	Pool	Status	Prices
-	221,2 m ²	3	4	-	Available	€525.000

1 1 premium design apartment of approximately 220 square meters of total covered area with a 23 square meters of balcony and a private roof garden of 62 square meters.

2 This unique apartment consists of 4 bathrooms and 3 bedrooms.





CYPRUS PERMANENT RESIDENCE PERMIT (PR)

PLAZA Exclusive Projects

Non-EU citizens who purchase property in Cyprus obtain a Permanent Residence Permit within 2 months.

Criteria:

Purchase a property of a minimum value of €300.000 plus VAT and provide proof of payment for at least €200.000 plus VAT with funds transferred from abroad.

Deposit of €30.000, with funds transferred from abroad, pledged for at least 3 years in a bank in Cyprus.

Depended children up to the age of 25 who are students may obtain PRP for life.

Parents of main applicant and parents of his/her spouse may also get PRP.

Proof of a minimum annual income of €30.000 increased by :

€5.000 and depended child

€8,000 for each applicant and spouse parent

Submit a clean criminal record certificate issued by the Authorities of their country of origin.

Submit a statement confirming they will not be employed in Cyprus. The applicant is allowed to be a shareholder of a Cyprus company and earn dividends.

Visit Cyprus at least once every two years. Provided that the criteria described above are fulfilled, the permit is granted within 2 months from the date of submission of the application.



Plaza
EXCLUSIVE PROJECTS

DEFINED BY
SERVICE &
EXPERTISE.

Thank You



www.plazaexclusive.com

(+357) 22 55 00 00

v.christou@plazaexclusive.com

Contact Person: Valando Christou

